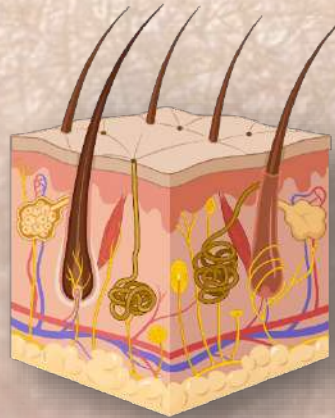
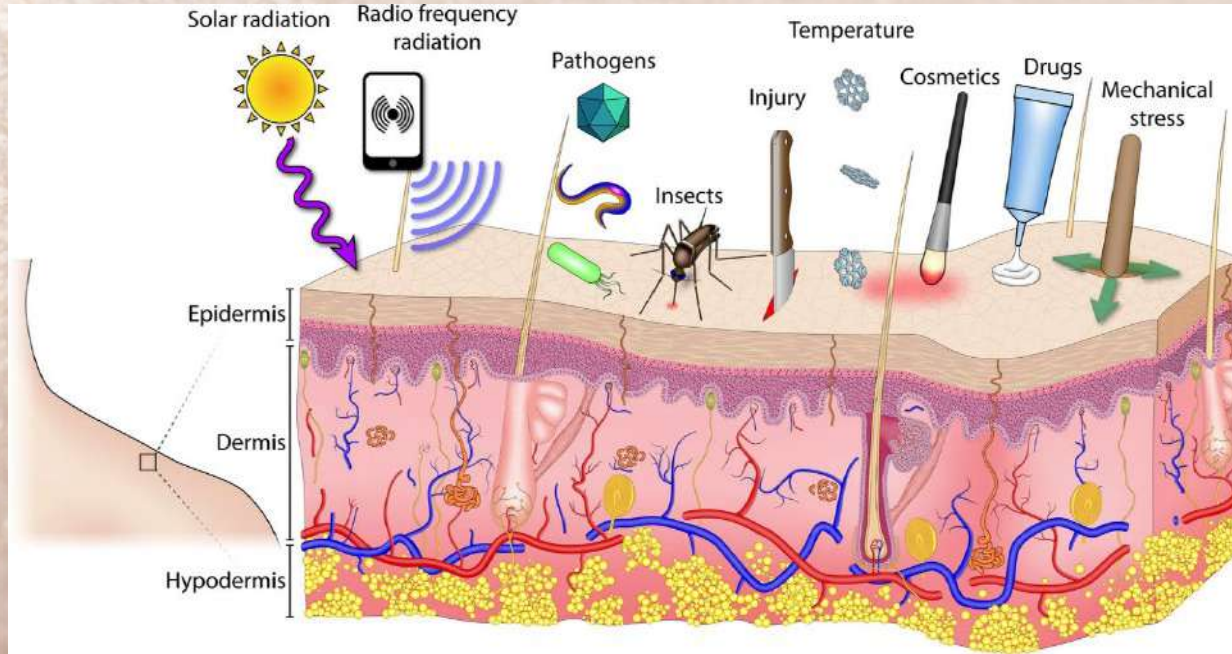


Was würde mit unserer Haut passieren, wenn...

Die Antworten von Hautmodellen



die Haut



Schutz



Regulierung



Kommunikation

❖ **1.7 m²**

das größte Organ deines Körpers

❖ **16%**

deines Körpergewichts

❖ **0.5 – 4 mm**

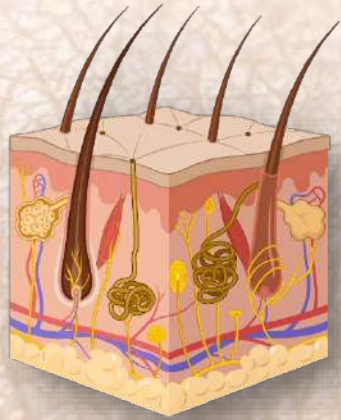
Dicke

Was wäre, wenn...



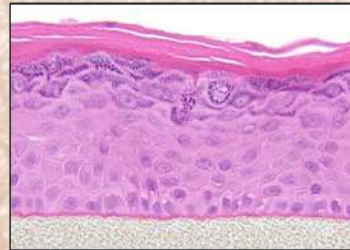
Was passiert, wenn man sich einen Papierschnitt zufügt?

Hautmodelle

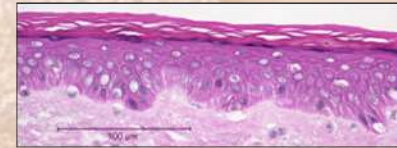


} Epidermis

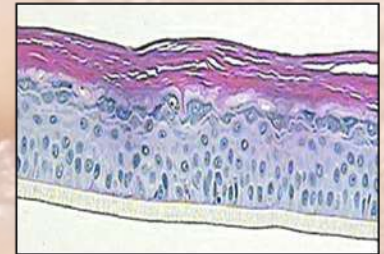
In Vitro Reconstructed Human Epidermis (RHE) Models Validated for Regulatory Purposes



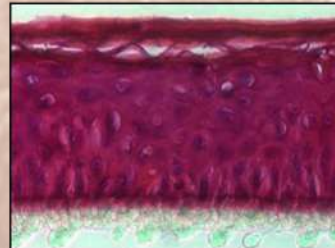
MatTek Corp. EpiDerm™ (EPI-200)



Native human skin



SkinEthic™ RHE



Cell Systems epiCS®



EpiSkin™ (SM)



J-TEC LabCyte EPI-MODEL



(*in vitro* RHE-Modelle, die für regulatorische Zwecke validiert wurden)

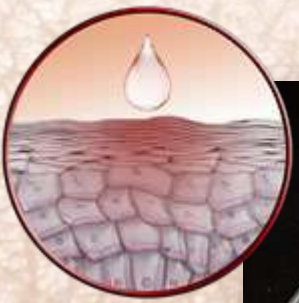


Section 4
Health effects

Test Guideline No. 439
In Vitro Skin Irritation: Reconstructed
Human Epidermis Test Methods

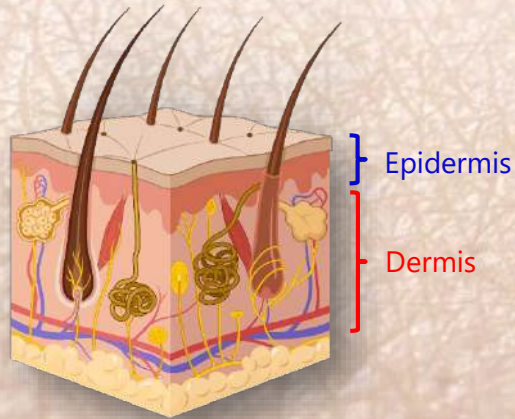
	EpiSkin™ (SM) (23)	EpiDerm™ SIT (EPI-200) (23)	SkinEthic RHE™ (23)	LabCyte EPI- MODEL24 SIT (26)	epiCS® (43)(44)	Skin+® (42)(43)
NON-CLASSIFIED SUBSTANCES (UN GHS No Category)						
naphthalene acetic acid	92.3 +/- 5.2	100.7 +/-8.4	104.0 +/- 12.9	100.4 +/-7.6	99.3 +/- 10.4	94.6 +/- 17.9
isopropanol	88.1 +/- 8.7	65.6 +/-16.5	101.0 +/-11.3	76.7 +/-7.0	97 +/-6.8	90.7 +/- 27.5
methyl stearate	98.5 +/- 11.3	107.7 +/-4.9	104.4 +/-15.8	99.3 +/-10.4	101 +/-8.0	101.7 +/- 6.5
heptyl butyrate	102 +/-4.2	104.1 +/-4.2	92.1 +/-17.5	105.4 +/-11.1	100.3 +/- 5.1	79 +/-17.8
hexyl salicylate	89 +/-1.8	106.9 +/-5.2	95.9 +/-12.5	100.9 +/-8.2	95 +/-8.0	89.1 +/- 16.3
CLASSIFIED SUBSTANCES (UN GHS Category 2)						
cyclamen aldehyde	25.4 +/- 12.1	18.5 +/-16.2	1.7 +/- 0.9	9.1 +/-2.9	12.8 +/- 26.4	3 +/-0.4
1-bromohexane	24.4 +/- 15.9	16.9 +/-2.5	1.3 +/-3.9	15.7 +/-3.4	10.4 +/-4.8	5.6 +/-0.7
potassium hydroxide (5% aq.)	9.3 +/-10.0	4.3 +/-1	16,7 +/-17	3.3 +/-3.1	2.6 +/-3.6	5.2 +/-1.5

Zum Beispiel: Hautreizungstest



No.

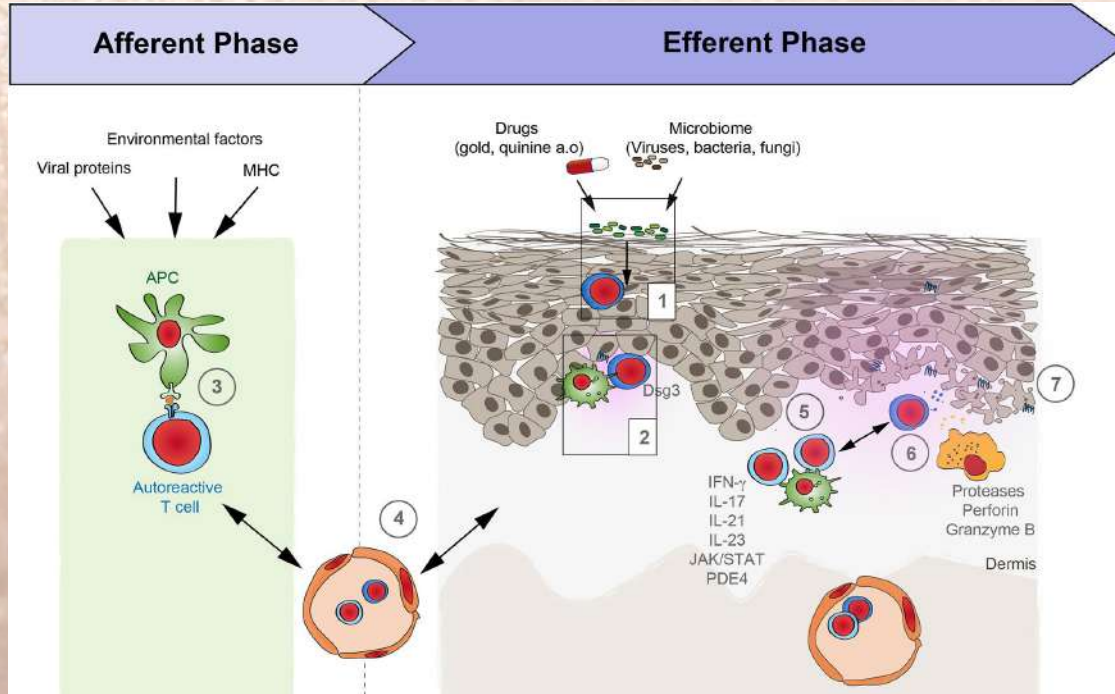
Über die Epidermis hinaus?



Was ist mit den tiefer liegenden Problemen?

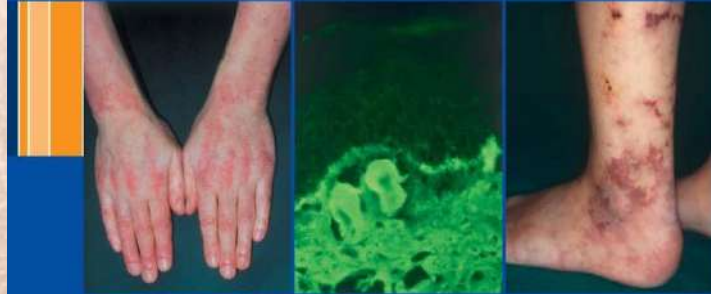
Zum Beispiel

Lichen Planus: Wie passiert das?



Michael Hertl *Editor*

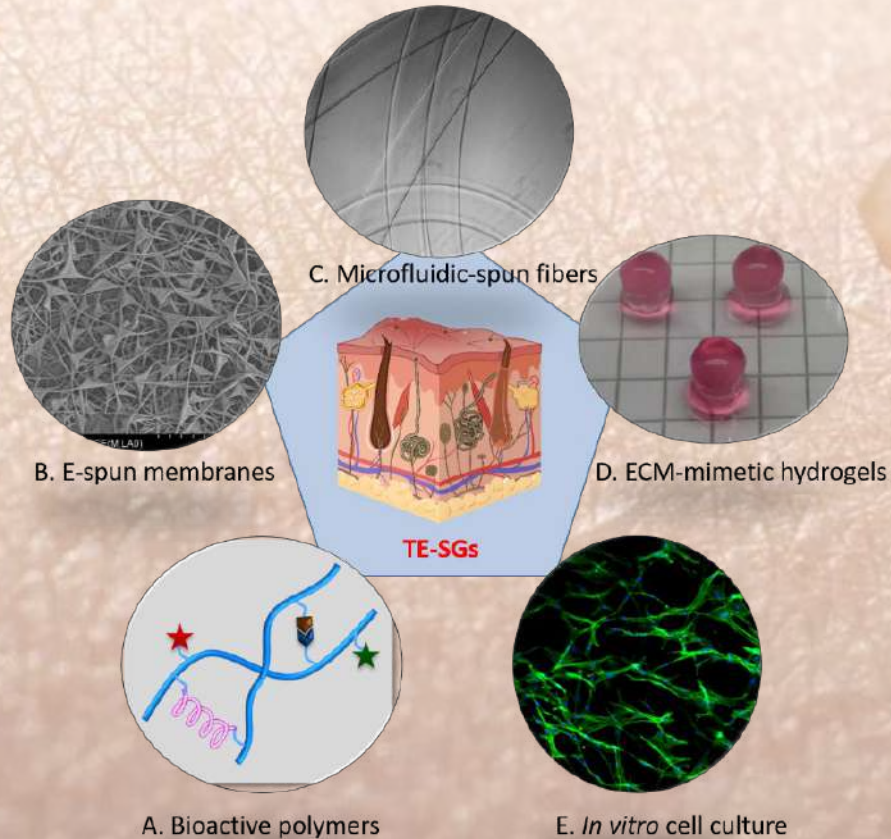
Autoimmune Diseases of the Skin



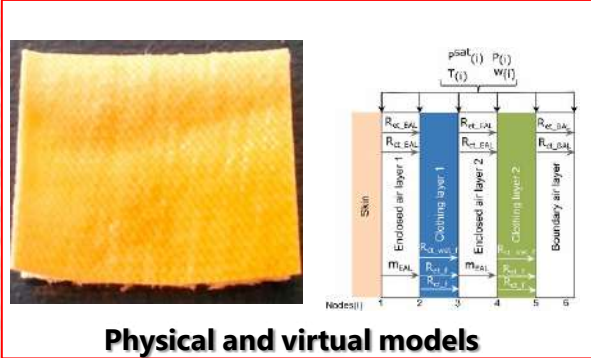
Pathogenesis,
Diagnosis,
Management

3rd Edition

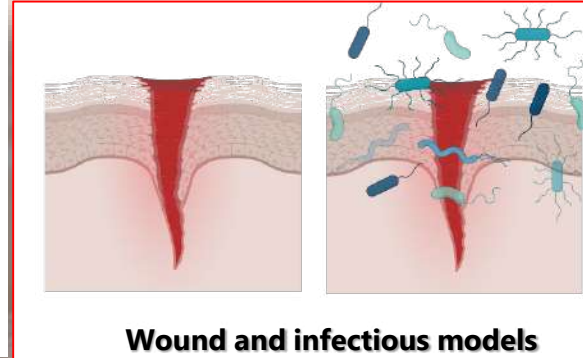
 SpringerWienNewYork



Gemeinsame Arbeitsgruppe für Hautforschung



Physical and virtual models



Wound and infectious models



Laboratory for Biomimetic Membranes and Textiles



Laboratory for Biointerfaces



Vielen Dank